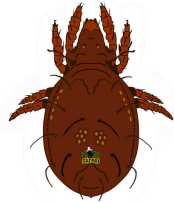




These five multicellular organisms are commonly found in moss. Read the descriptions carefully and look at the pictures to identify the animal you have found. Images are not to scale.



### Mites

Look for:

- A dark pear-shaped body
- 8 legs with hooks on the end
- Long hairs on the body and legs
- Legs can be moving or tucked away



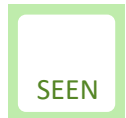
Length range  
0.4-1.0 mm



### Nematodes (thread worms)

Look for:

- A long worm
- Pointed head end
- See-through body with a darker gut
- Eggs may be seen in the body as ovals



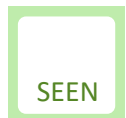
Length range  
0.4-1.0 mm



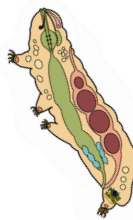
### Rotifers (wheel animals)

Look for:

- A crawling worm-shaped
- Sometimes two 'wheel organs' open
- Two toes at the end of the body
- Egg may be seen in body as a dark oval



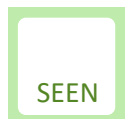
Length range  
0.2-0.6 mm



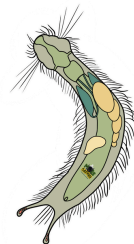
### Tardigrades (water bears)

Look for:

- A sausage-shaped body
- 8 stubby legs with claws
- A pointed snout-shaped mouth
- Maybe two red or black eye spots



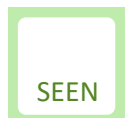
Length range  
0.4-0.8 mm



### Gastrotrichs (hairy bellies)

Look for:

- A hairy flat worm
- A forked tail
- Long 'whiskers' from head
- Fast and darting when swimming

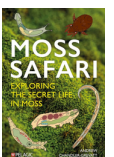


Length range  
0.2-0.4 mm



Find out more at [www.mosssafari.com](http://www.mosssafari.com)

© 2025 A. Chandler-Grevatt / Moss Safari. This work is licensed under a Creative Commons Attribution-Non Commercial 4.0 International License (CC BY-NC 4.0). Schools, universities, and educators are welcome to use, copy, and adapt this content for teaching and learning acknowledging the original source. Commercial reproduction or distribution is not permitted without permission. More information: [www.mosssafari.com](http://www.mosssafari.com).



Connect with nature



Promote microscopy



Inspire STEM